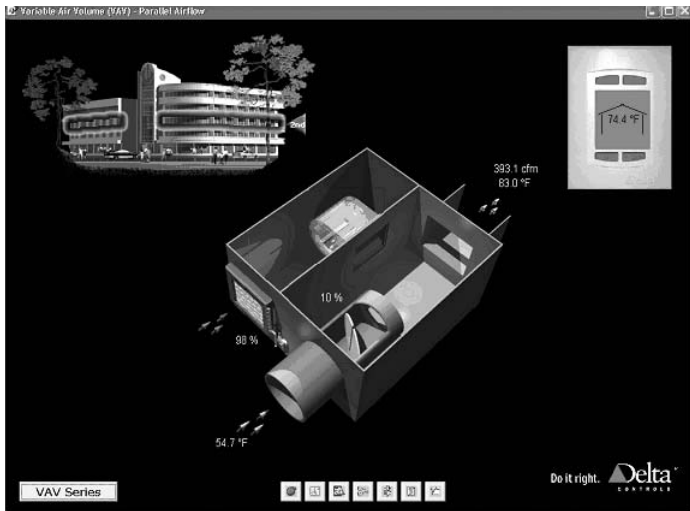


## Software

### DOW-330: ORCAview

#### Description

ORCAview is an industry leading operator workstation software package that combines an intuitive graphical user interface with powerful, easy-to-use facility management tools.



ORCAview includes a three-dimensional animated graphics tool for displaying real-time building information, and an intuitive object-oriented Navigator to monitor operational parameters, modify schedules, create custom programs, manage alarms, and view trend logs.

ORCAview uses BACnet IP to communicate over wide area networks including the Internet or intranets to any building or site. BACnet over Ethernet and BACnet MS/TP are used to communicate to local area networks.

BACnet PTP may be used to connect to any Delta Systems Controller either directly or via modem for remote site-wide access.

Several optional software packages expand ORCAview's capabilities to provide unparalleled facilities management solutions. Easily create intuitive, custom system graphics with the Illustrator option. Use the optional Historian package to archive and preserve years of trend log and alarm data in a SQL database. Connect the entire building automation network to business-level applications with the optional ODBC driver.

#### Specifications

##### BACnet Device Profile

BACnet Operator Workstation (B-OWS)

##### Operating System

Microsoft Windows 98/2000/XP

##### PC (minimum)

Pentium or Athlon @ 1 GHz

128 MB RAM

1 GB hard disk space

##### Video

1024 x 768 (16 bit color)

## Software

### DOW-330: ORCAview

#### Application

ORCAview provides simple and powerful solutions to facility managers and service personnel for managing HVAC, lighting, access and other building systems.

Custom graphics of the system allow facility managers to operate their buildings easily and efficiently by monitoring equipment status, alarms, and adjusting setpoints and schedules.

Service personnel and programmers will find the intuitive Navigator a valuable tool for troubleshooting and diagnostics.

ORCAview can be connected to any size building automation system from small commercial buildings to large university campuses connected over a WAN.

BACnet devices from any vendor are automatically detected and integrated into the software, giving facility managers a single-seat of operation for all their systems.

#### Features

—Manage HVAC, Access, and Lighting systems with one intuitive, single-seat, front-end software package

—Make HVAC, Access, and Lighting systems work together with simple GCL+ programs

—Efficiently operate building systems with real-time, three-dimensional animated graphics

—Reduce setup and configuration time with automatic discovery of BACnet devices

—Browse the intuitive Windows based object-oriented Navigator to monitor operational parameters, modify schedules, create custom programs, manage alarms, and view trend logs

—Create professional reports including tenant billing and door access activity using powerful built-in reporting tools

—Connect to your building automation network from any where in the world using BACnet IP

—Connect to your LAN using BACnet over Ethernet, BACnet MS/TP (RS-485), or BACnet PTP (RS-232)

—View the entire building network by connecting to any Delta BACnet device; even a thermostat

—E-mail or page alarms and events to service personnel with the built-in Event Management System

—Integrate and seamlessly view any Delta devices or third party BACnet devices

—Analyze up to eight trend logs on one real-time graph with the powerful Multi Trend

—Use Navigator's advanced querying and filtering to drill-down and view specific data

—View and manage Delta's cutting edge BACnet controllers and legacy Intelli-sys generation controllers

—Supports multiple languages with the capability to change languages on-the-fly

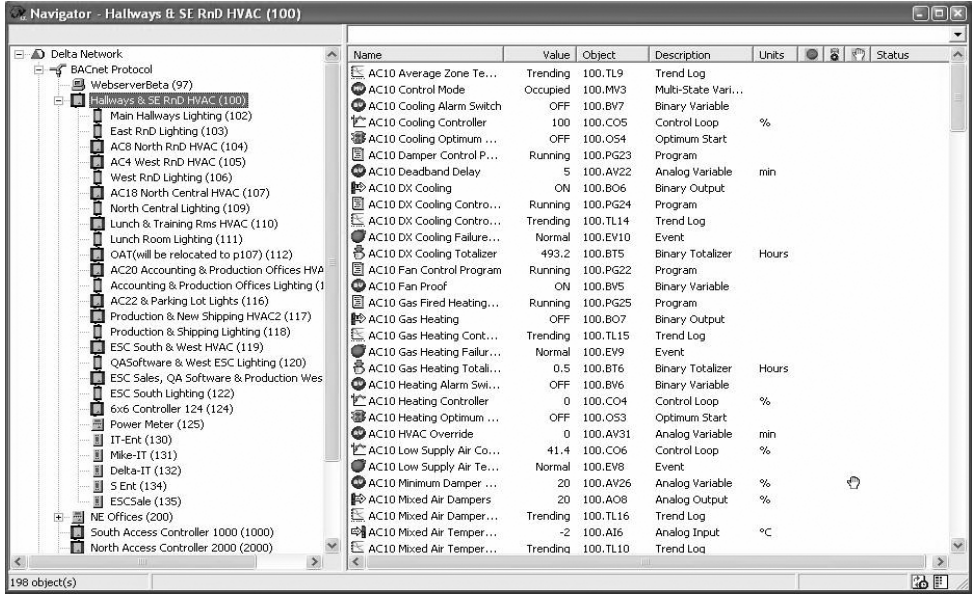
—Rapidly develop customized real-time system graphics with the optional Illustrator package

—Archive and retrieve historical data for thousands of trend logs and events with the optional SQL server based Delta Historian

—Integrate building systems information with business-level products using the optional Delta ODBC Driver

## Software

### DOW-330: ORCAview Ordering Options



#### Ordering

Order DOW-330—ORCAview software with the desired options according to the following product numbers:

DOW-330—Delta Operator Workstation Software, Version 3.30, including manual and hardware key

Append the following to order optional software (example DOW-330-I-HM-0):

- I—Illustrator drawing package
- HS—Historian Small (<50 Trends Logs)
- HM—Historian Medium (<250 Trends Logs)
- O—ODBC and DDE drivers